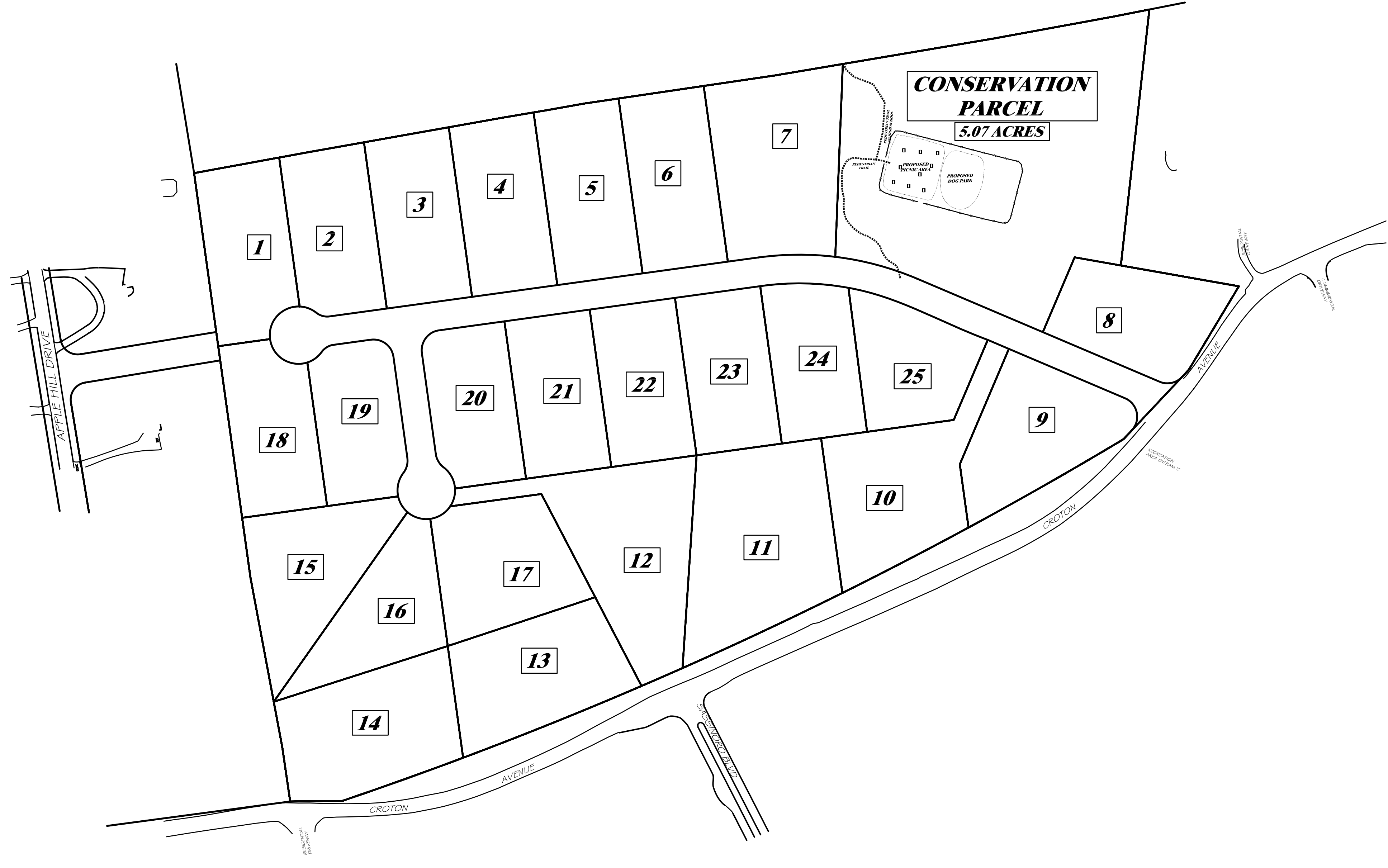


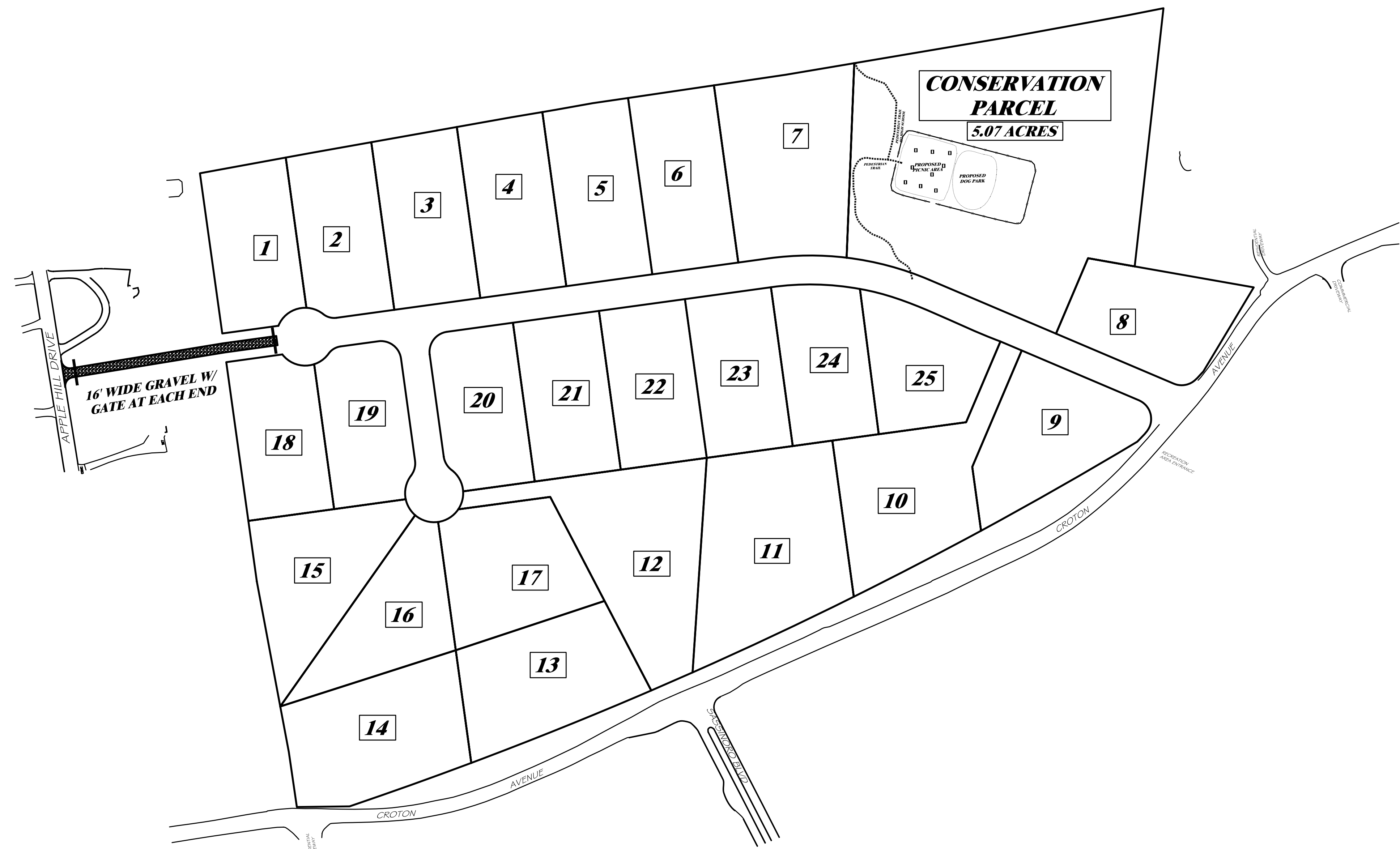
**PREFERRED PLAN**

SCALE: 1 IN. = 120 FT.



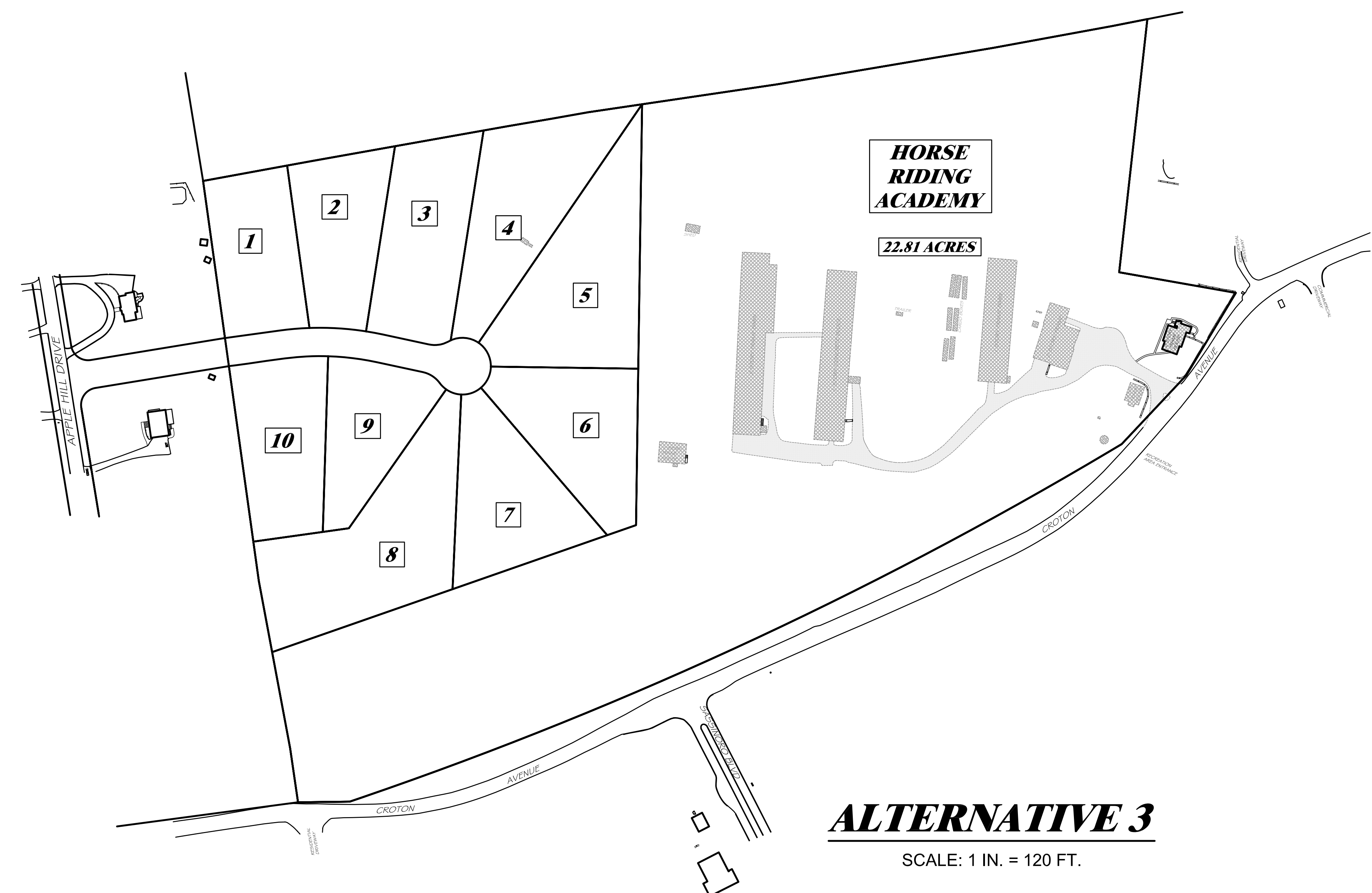
**ALTERNATIVE 1**

SCALE: 1 IN. = 120 FT.



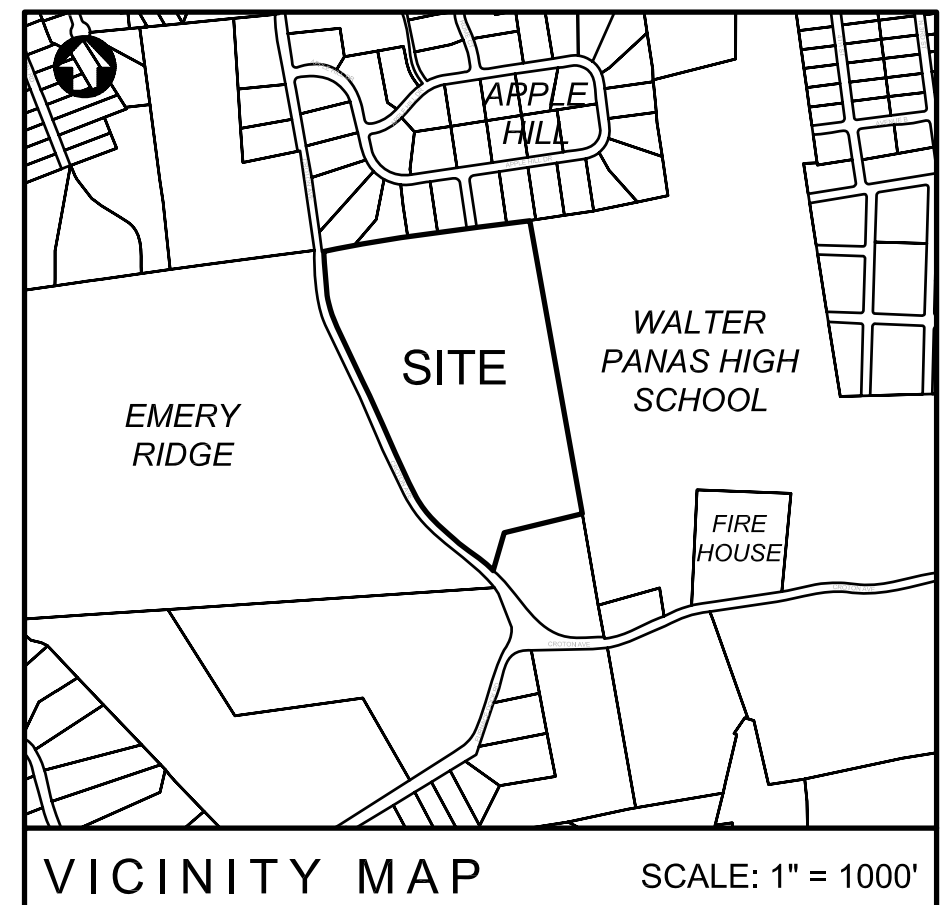
**ALTERNATIVE 2**

SCALE: 1 IN. = 120 FT.



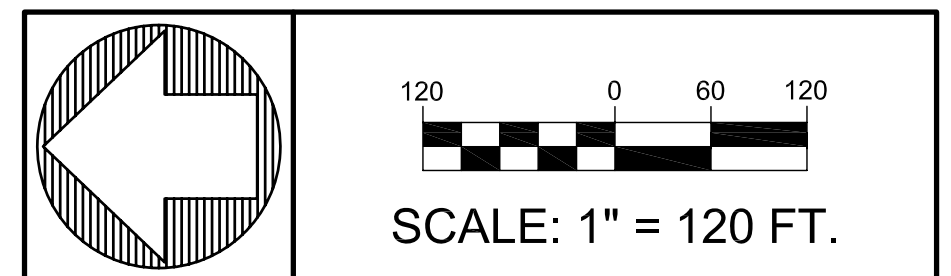
**ALTERNATIVE 3**

SCALE: 1 IN. = 120 FT.



VICINITY MAP SCALE: 1" = 1000'

**Dig Safely.**  
**New York**  
 (800) 962-7962  
 www.digsafelynewyork.com



SCALE: 1" = 120 FT.

OWNER/DEVELOPER  
**HANOVER ESTATES**

PROPERTY OWNER  
**CROTON REALTY & DEVELOPMENT, INC.**  
 150 CROTON AVENUE  
 CORTLANDT MANOR, NY 10567

UNDER NEW YORK STATE EDUCATIONAL LAW ARTICLE 145, SECTION 7209 (2), IT IS UNLAWFUL FOR ANY PERSON TO ALTER ANY ITEM ON THIS DRAWING, UNLESS ACTING UNDER THE DIRECTION OF A LICENSED PROFESSIONAL ENGINEER. IF ANY ITEM IS ALTERED, THE ALTERING ENGINEER SHALL AFFIX TO THE ITEM HIS SEAL AND THE NOTATION "ALTERED BY" FOLLOWED BY HIS SIGNATURE AND THE DATE OF SUCH ALTERATION AND A SPECIFIC DESCRIPTION OF THE ALTERATION. COPYRIGHT ©2011 BY CRONIN ENGINEERING, P.E., P.C. ALL RIGHTS RESERVED.

REVISIONS

#	REASON	DATE

MUNICIPAL TAX IDENTIFICATION:		
SECTION:	34.14	
BLOCK:	2	
LOT:	28	
SUBLOT:	---	
DRAWN BY: JWT		TIMOTHY L. CRONIN III, P.E. LICENSE #062380
CHECKED: KCS		
PROJECT: JACOBSON		
DATE: FEBRUARY 14, 2011		
JOB #: 100210		

**CRONIN ENGINEERING**  
 PROFESSIONAL ENGINEERING & CONSULTING  
 (914) 736-3664

39 ARLO LANE  
 CORTLANDT, NEW YORK 10567

SUBDIVISION ALTERNATIVES  
**SUBDIVISION PLAN FOR**  
**HANOVER ESTATES**

LOCATION:  
 150 CROTON AVENUE  
 TOWN OF CORTLANDT, NEW YORK 10567

SHEET 6 OF 6 **ALT-5.1**